

WELCOME

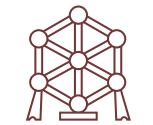
FACTS & FIGURES



POPULATION OF FLANDERS
6 516 011



CURRENCY
EURO



CAPITAL
BRUSSELS



LANGUAGE IN FLANDERS
DUTCH



POPULATION OF BELGIUM
11 322 088



OFFICIAL LANGUAGES IN BELGIUM
**DUTCH, FRENCH,
GERMAN**



TIME ZONE
GMT +1



COUNTRY DIALING
CODE
+32



FLANDERS:
**FEDERATED
ENTITY OF THE
FEDERAL STATE
OF BELGIUM**

HIGHER EDUCATION INSTITUTIONS IN FLANDERS



5 UNIVERSITIES

Ghent University |
Hasselt University |
KU Leuven - University of Leuven |
University of Antwerp |
Vrije Universiteit Brussel



**13 UNIVERSITY
COLLEGES**

Antwerp Maritime Academy |
Artesis Plantijn University College
Antwerp | Artevelde University
College Ghent | Erasmus
University College Brussels |
Howest University College West
Flanders | Karel de Grote University
College | LUCA School of Arts |
Odisee University College | PXL
University College | Thomas More
University College | University
College Ghent | University
Colleges Leuven-Limburg |
VIVES University College



SCHOLARSHIPS

- Erasmus+
- The Master Mind Scholarship Programme for master studies in Flanders
- International Course Programmes for students from developing countries: www.vliruos.be/en/scholarships
- Scholarships from the host institutions



STUDY IN FLANDERS

BELGIUM FLANDERS



www.studyinlanders.be

FLANDERS AND BRUSSELS, A GREAT PLACE FOR STUDYING AND LIVING



Choice between excellent research universities, globally competitive business and management schools, practice-oriented degrees at university colleges and world class schools of arts.

MORE INFORMATION

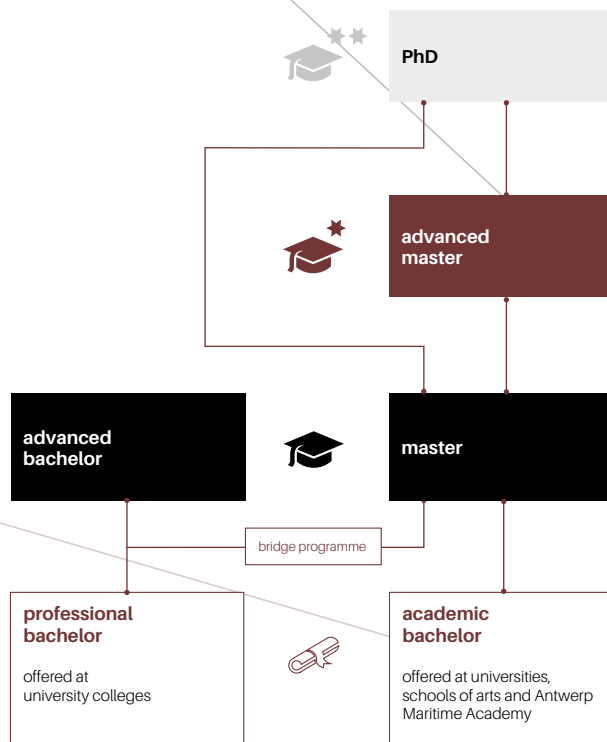
Study programmes:
www.studyinlanders.be

General portal for Flanders:
www.flanders.be

General portal for Belgium:
www.belgium.be

Tourist information:
www.visitflanders.com
www.visitbrussels.be

STRUCTURE OF HIGHER EDUCATION IN FLANDERS



Find your study programme on
www.studyinlanders.be/en/study-programmes/

LANGUAGE OF INSTRUCTION

As Flanders is a Dutch speaking region, many programmes are taught in Dutch.

PROGRAMMES IN ENGLISH

18 bachelor degrees
176 master degrees
60 advanced master degrees
39 postgraduate certificates
100+ PhD trajectories and tailor-made programmes

Besides degree programmes, we have many semester programmes in English for exchange students.

Proof of language proficiency is required for most degree programmes. If needed, you can do a language year before you enrol for a degree programme.

ADMISSION

Admission requirements depend on the study programme and the host institution. Each institution has its own deadline for submission of applications. Entry examinations are compulsory for Dentistry, Medicine and Fine Arts. More information on the website of the Flemish Institution of your choice.

STUDENT VISA

EU/EEA nationals: no visa; only register with the residence authority.

Non EU/EEA nationals need a visa or authorization to enter and stay in Belgium. Apply at the Belgian Consulate or Embassy in your country of residence. If there is no Belgian consulate or embassy in your country, you may submit your application to the Belgian consulate or embassy in a neighbouring country.

Needed for a student visa: proof that you can support yourself by own financial means, a scholarship, a guarantor... Minimum financial means (as of 2018): 850 euros per month.

Students graduating from June 2018 onwards can extend their residence permit for 9 months to find a job or start a business in Belgium.

Belgian embassies and consulates general outside Belgium, Foreign embassies in Belgium:
www.diplomatie.belgium.be
Immigration Service of the Federal Public Service Home Affairs:
www.dofi.fgov.be

TUITION FEES

Access to higher education is highly valued in the Flemish society and all bachelor and master programmes offered at public institutions are subsidised by the Flemish government, making tuition fees affordable.

EU/EEA nationals: min. 906,1 euros (2017-2018, full time programme).
Non EU/EEA nationals: fees in Flanders are lower than the international average.

COST OF LIVING

Minimum 850 euros per month, including accommodation, meals, personal expenses, study materials and transportation. Most institutions have restaurants, sports facilities, ... offering discounts.

Many institutions have rooms available for students or provide lists of local rooms for rent. Contact your host institution for housing information. Average rent per month: 380 euros for a room / 500 euros for a studio flat.

WORKING IN BELGIUM

You can work a few hours a week to top up your budget, but financing your education through a student job is not advisable as it could harm your study progress.

Non EU/EEA nationals in Belgium with a student visa: you have to be a full-time student. You are allowed to work up to max. 20 hours a week. Depending on your citizenship, a work permit is needed.

For more information, you may contact the job service of your Flemish host institution or the Immigration Service of the Federal Public Service Home Affairs:
www.dofi.fgov.be.

© Layla Aerts

